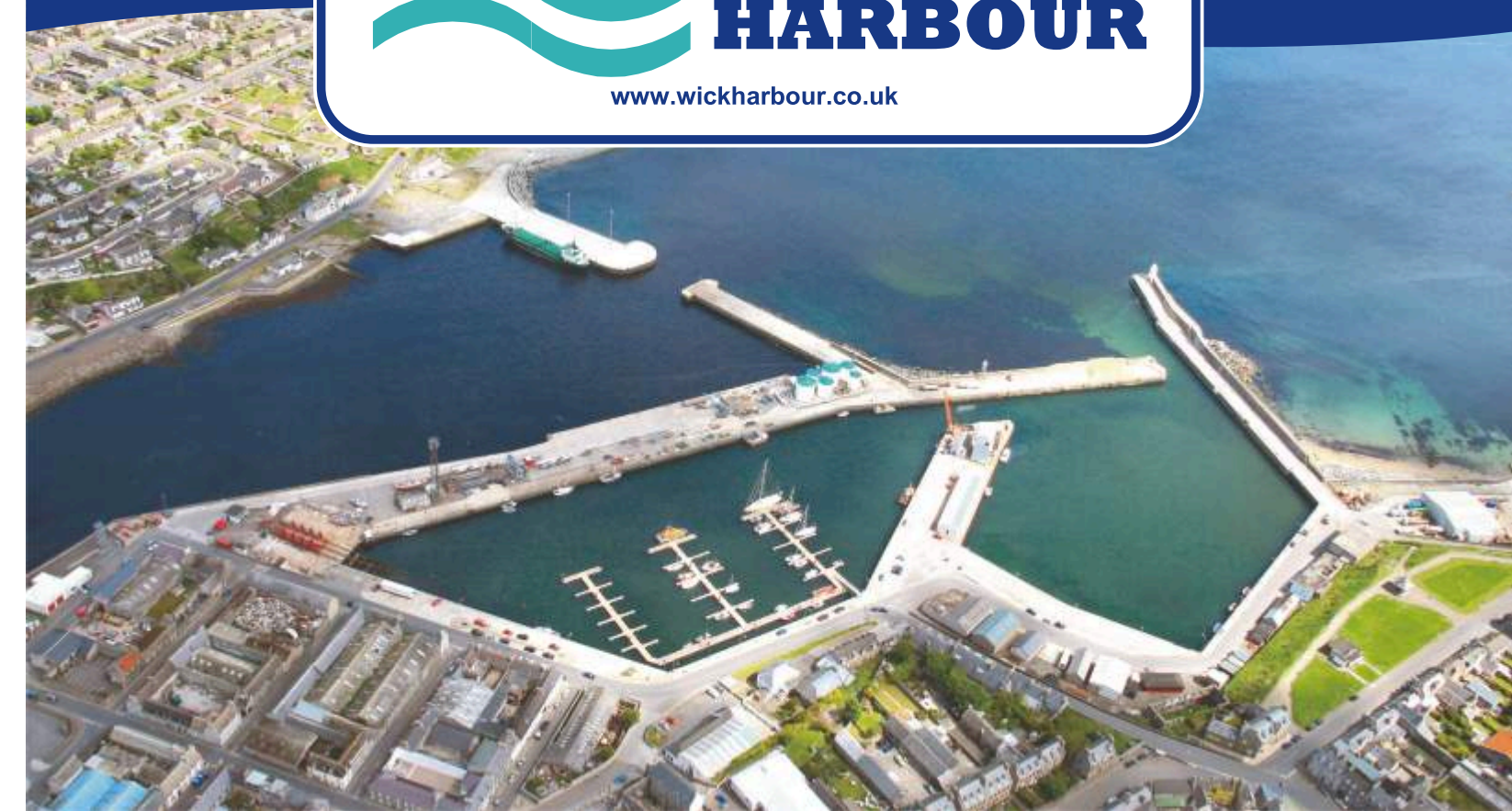


Wick Harbour - Port Infrastructure



The ideal location to support your Offshore Operations and Maintenance needs



Location:
 • ND368505
 • Lat: 58 deg 26.5m N • Long: 03 deg 04.0m W
 • Chart No: 1462

Harbour Piers and Quays:

Commercial Quays 1 and 2	9,600 sq.m.
South River Pier – River harbour	2,000 sq.m.
North River Pier – River Harbour (heavy lift)	6,600 sq.m.
Bremner Wharf - Outer Harbour	4,000 sq.m.
South Pier - Outer Harbour	2,200 sq.m.
• All piers & quays have bitmac, stone, or concrete surface.	

Areas for Development:

Former Dry Dock Area – River Harbour	3,400 sq.m.
Former Slipway Area	1,800 sq.m.

South Head:

Shallitgoe	3,000 sq.m.
Mid Quarry Area	4,200 sq.m.
South Quarry Area	8,500 sq.m.
• Former dry dock area, and South Head areas are mostly hard standing.	

Existing Business:
 Imports: Fuel oil, agricultural lime, coal, road salt, steel pipe, oil related cargo and wind turbines.

Exports: local high quality barley for malting & timber. White and shell fish landings for consignment direct to clients.

Vehicle and Commercial Parking:
 Extensive parking and storage available in and around the Harbour area.

Commercial opportunities:
 WHA are enabled to enter commercial contracts or partnering agreements with developers/contractors.

Planning:
 WHA have planning responsibility on shipping related infrastructure.

Drainage (foul & surface water):
 Complies with local authority regulations.

Utilities:

- Fresh water available on all quays – maximum 50 T / hr.
- Electricity on main working quays.
- Local BT Exchange.
- 02 Mast on North Floodlight Tower.
- Broadband Wifi.
- Mains gas nearby.
- Gas oil supply direct to ship from Tank Farm on Commercial Quay 1.
- Weighbridge.
- RNLI Lifeboat on station.
- MCA Rescue Sub Centre on Bremners Wharf.
- Fire Station beside Slipway.

Load Out Capability:
 Total quayside length is 1,366m, with a total area of 24,400 sq.m. North River Pier is the designated heavy lift area with additional areas planned. 300 tonne Towheads regularly landed on Dry Dock area.

Vessel Size and Cargo Handling:
 Normal maximum vessel length is 85m, however 90m vessels can be berthed subject to approval by the Harbourmaster, to ensure that the vessel type, draft, and DWT can be safely accommodated.

Depth alongside Inner/Outer Basin: -2.0m CD
 Depth alongside River Basin: -4.8M CD

Local Stevedores are available on site with mobile cranes up to 360 tonnes capacity and truck and plant hire. Larger craneage up to 1000 tonnes can be arranged.

Existing/future buildings:
 Various buildings related to harbour activities including the former fish mart which is planned for conversion into a multi user facility.

The former Dry Dock area is currently leased to Tocardo Tidal Energy Ltd for the production and assembly of tidal power machines. The onsite premises will also feature a technical/multi-user building.

Enhancement of buildings is ongoing, including provision of new facilities, rest rooms, etc. in support of the new Marina facility.

Other areas available to rent for retail and service industries along with residential and business opportunities.

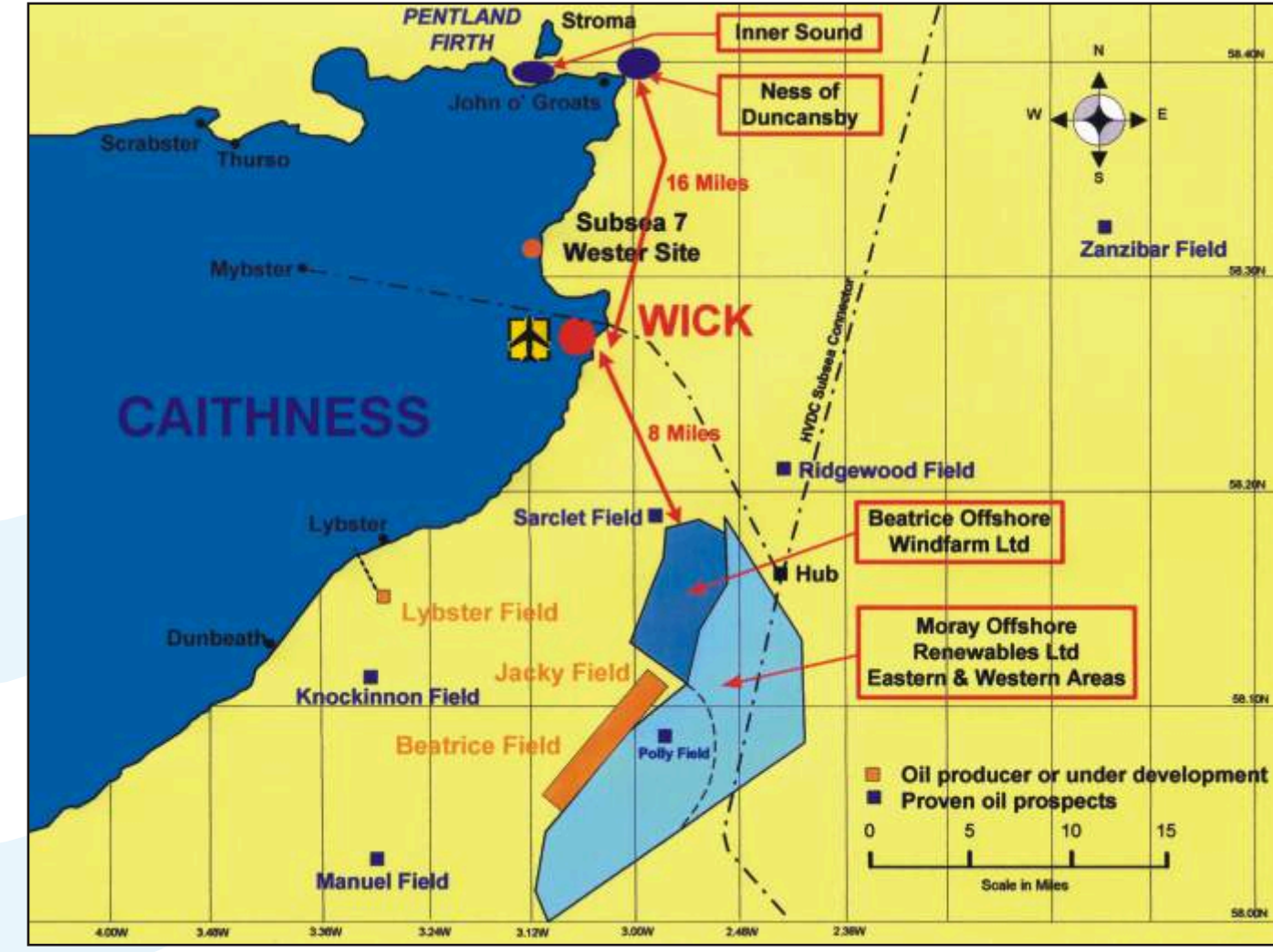
Vehicle and Heavy Transport access:
 Excellent road access – imported wind turbine blades of 44m in length and large Towheads of 300 tonnes (27m (L) x 6m (W) x 10m (H) have all been handled utilising specialised transport.

Personnel Transfer:
 The new Marina can be utilised for smaller vessels

Customs and Shipping Agents:
 Already based at Wick Harbour.
 Harbour Master is Danish Vice Consul.

Local amenities and services:
 All usual town services, supermarkets, etc plus General Hospital offering full medical and surgical facilities. Mechanical, electrical, electronic, hydraulic, fabrication, and engineering services all available.

Wick Airport:
 Wick Airport is one mile from the Harbour, with three return flights to Aberdeen and one to Edinburgh daily, and currently handles and refuels offshore helicopter services for West of Shetland.



Contact Information:
 Harbour Office
 Wick, Caithness, KW1 5HA
 Tel: +44 (0)1955 602030
 Fax: +44 (0)1955 605936
 Email: office@wickharbour.co.uk



www.investcaithness.com

Wick Harbour - Area

Wick Harbour

Wick Harbour has vast experience of handling traditional and energy related cargos including pipelines, towheads, wind turbines and the fabrication/load out of large offshore structures. The most northerly east coast port, with 24/7 access, provides an opportunity for developers to joint venture/partner or simply use the facilities on offer. With a 70 berth marina available, smaller fast boats can be serviced and loaded with ease. In addition there are large tracts of land/premises for development opportunities and with the wide array of local support services and amenities, Wick is the ideal choice for supporting Offshore Operations and Maintenance in the Moray Firth, Pentland Firth and Orkney Waters.

Planning

The port is owned and managed by Wick Harbour Authority and has a planning remit for shipping related activities.

Proximity attractions

- **Minutes** from the latest Rounds of Oil Block Licensing Awards and Beatrice Windfarm sites in Inner Moray Firth
- **Close** to proposed subsea cable Hub and routes.
- **5 miles** from Subsea 7 Pipeline Bundle facility at Wester, offering large fabsheds and beach launch area.
- **15 miles** from the Pentland Firth Renewables sites.
- **16 miles** to Jacky field.
- **20 miles** to Beatrice Bravo.
- **60 miles** from the two EMEC Marine Test Centres.

Wick Airport

The airport, operated by HIAL, is five minutes from the harbour, and offers three daily return flights to Aberdeen and a daily return from Edinburgh. Offshore helicopter servicing / refuelling is carried out, mainly on flights to West of Shetland.

Land and Sea Transport

Road and rail links into Wick are excellent with the A9 and A99 trunk roads providing easy access, along with Wick railway station and regular coach services.

Wick Airport Industrial Estate and Business Park

Both situated within one mile of the Harbour. Vacant modern premises and sites are available from Highland Council and Highlands & Islands Enterprise.

Underwater Services in Wick

Kongsberg Maritime's subsea cameras help explore the deepest part of the earth's oceans.

Subsea 7 assembles the world's largest movable structures (pipeline bundles for the oil and gas industry) from its base at Wester. 7.6km long pipeline bundles.

Fathoms provide divers and ROVs for all your underwater needs including survey work as well as monitoring and inspection of installations.

Construction Management

The harbour boasts a strong civil engineering link dating back to when the harbour was built. Today the harbour provides innovative thinking, strong leadership backed by a progressive Board, with experience and understanding of the needs which help to deliver success.

Wick Harbour - Local Infrastructure

North Highland College, UHI

The North Highland College main campus is located in Thurso with an annexe in Wick. Major investment has seen the construction of the Centre for the Energy and the Environment which will deliver a £4M research programme in marine, renewable energy and the environment. A new Engineering Skills Centre will allow Caithness to build on its strong reputation for producing high quality science and engineering based skills.

Environmental Research Institute

ERI, located in the North Highland College Campus is at the heart of some world class natural resources which enable the college to deliver acclaimed research, education and training, as well as consultancy and other commercial services and knowledge exchange.

Skilled workforce

With over 50 years working in the nuclear and oil/gas energy sector there is a wealth of skills and innovative thinking, well equipped to transition into the renewables markets

Local businesses

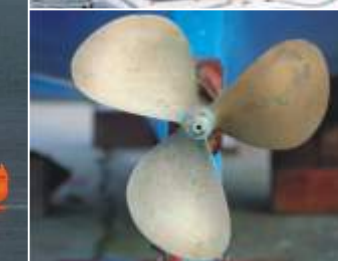
With numerous highly skilled engineering companies the county is well equipped to provide project management, design and build, electrical/mechanical/civil engineering, and environmental science, as well as modern state of the art buildings available for all fabrication and assembly needs with excellent links to Wick Harbour.

Vessels and craft

In the Moray basin a diverse range of vessels are available to meet every requirement including tugs, crew boats, crane barge and workboats. Survey vessels work out of Wick on a regular basis along with Wind Cats.

Amenities and leisure

Caithness offers a range of leisure facilities, coupled with good social infrastructure for well-being and education along with affordable housing and a range of indoor and outdoor activities for all ages.



For all your Operational & Maintenance Requirements